

Grade 1 OVERVIEW

Week 10 Term 2

Communication is the key to success.

To support your child's Grade One learning journey, regular updates will be accessible on the Year One Curriculum page on the Altona Primary School website.

The purpose of this information is to create and maintain an inclusive learning partnership between the happenings



Reading

FOCUS - Features of a nonfiction text

WHAT IT MEANS - When learning about non-fiction texts, children will be taught that information can be represented in a variety of ways and the features help us to understand the text better.

VOCABULARY TO USE - non-fiction text, features, contents, glossary, index, headings, captions, labels and diagrams.

Your child will receive a reading goal focusing upon recognition of the features of a non-fiction text. To assist in their achievement of their reading goal ask them to talk about these features in their non-fiction texts.

Nonfiction Text Features

Book Title _____

Text Feature	Did you find it in your book?	If yes, what page?
Diagram		
Bold Word		
Map		
Caption		
Table of Contents		
Glossary		

These text features help us to understand the text and locate important information in our book!

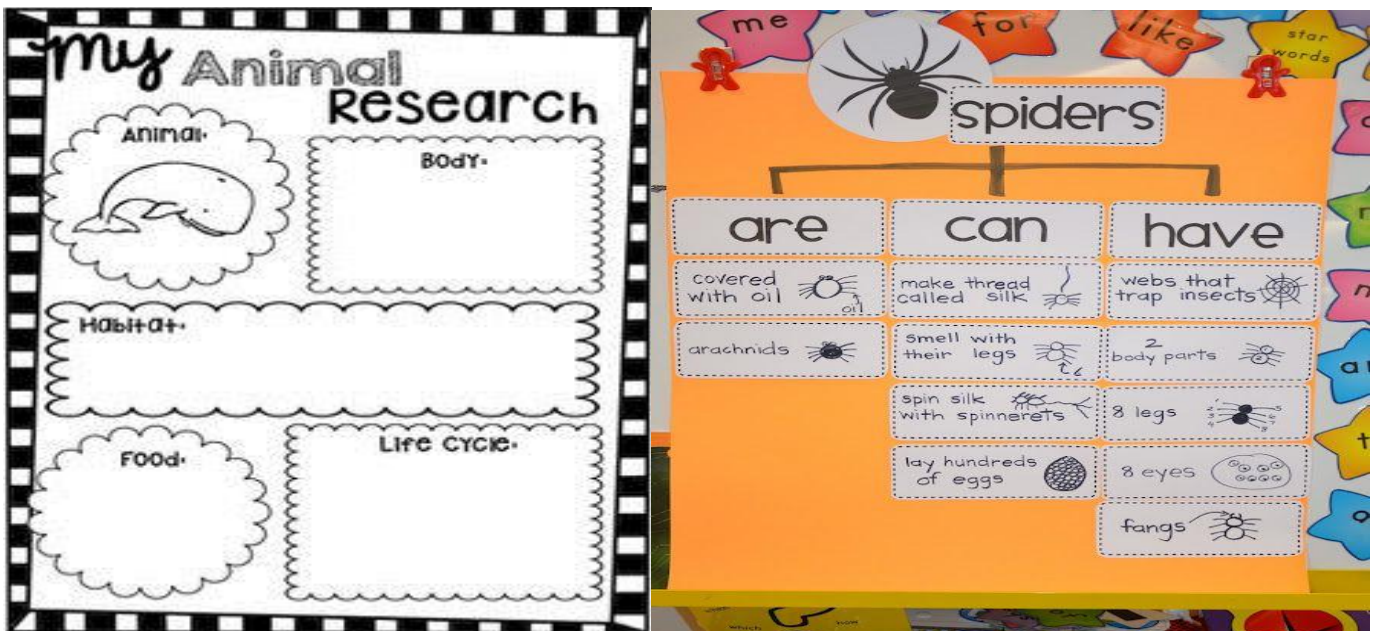
Writing

FOCUS - Development of an Information report.

WHAT IT MEANS - We are commencing the unit of study about Information Reports. The students will learn how to sequence a simple Information report, how to use sub-headings and report interesting facts in an imaginative and entertaining way.

VOCABULARY TO USE - information report, title, classification, description, location dynamics, diagrams, labels.

Encourage your child to write an Information Report of their own based on e.g. an animal and identify the elements of their writing.



Mathematics

FOCUS - Location

WHAT IT MEANS - The children will learn that people need to give and follow directions to and from a place, and that this involves turns, direction and distance.

VOCABULARY TO USE - location, left, right, under, above, forward, backwards, north, south, east, west, between, clockwise, anticlockwise.

Reading a Map

Study the map of the park. Then, complete the steps below.

1. How many picnic tables are in the park? _____
2. Draw a circle around the swings.
3. Color the trash cans blue.
4. Draw a triangle around the stop sign.
5. How many slides are in the park? _____



Map Key

				
Trash	Picnic Table	Stop Sign	Slide	Swings

Copyright © 2011-2012 by Education.com. More worksheets at www.education.com/worksheets

Describe the Position

Look at the picture. Use the position words in the box to describe the position of each object listed.



1. The frog is _____ the dragonfly.
 above below behind
2. The farmer is _____ the barn and pond.
 above below between
3. The horse is _____ the barn.
 above in around
4. The dog is _____ the barn.
 in front of in back of near
5. The sun is _____ the pond.
 behind around above